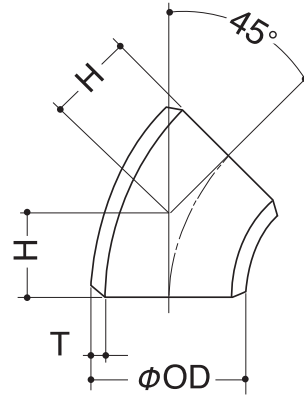
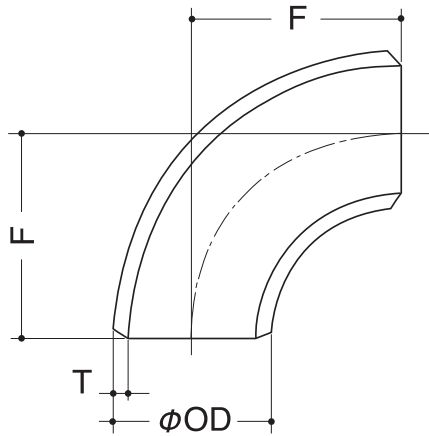


AMT

ステンレス鋼製突合せ溶接式管継手製品案内



エルボ 90EL 90ES 45EL

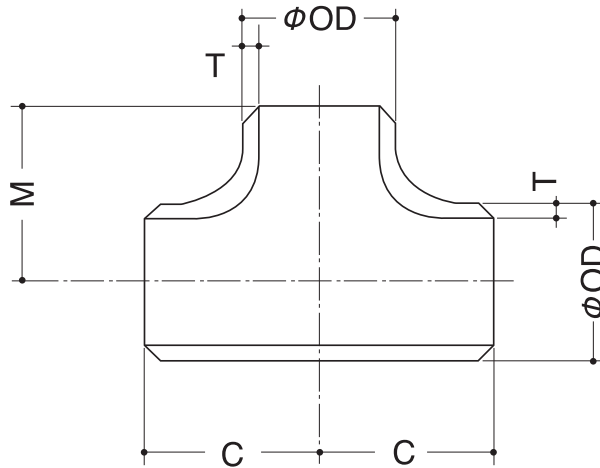


単位 mm

呼び径		外径	厚さ		中心から端面までの距離		
			Sch10S	Sch20S	90EL	90ES	45EL
		OD	T	T	F	F	H
15 ^A	1/2 ^B	21.7	2.1	2.5	38.1	***	15.8
20	3/4	27.2	2.1	2.5	38.1	***	15.8
25	1	34.0	2.8	3.0	38.1	25.4	15.8
32	1 1/4	42.7	2.8	3.0	47.6	31.8	19.7
40	1 1/2	48.6	2.8	3.0	57.2	38.1	23.7
50	2	60.5	2.8	3.5	76.2	50.8	31.6
65	2 1/2	76.3	3.0	3.5	95.3	63.5	39.5
80	3	89.1	3.0	4.0	114.3	76.2	47.3
100	4	114.3	3.0	4.0	152.4	101.6	63.1
125	5	139.8	3.4	5.0	190.5	127.0	78.9
150	6	165.2	3.4	5.0	228.6	152.4	94.7
200	8	216.3	4.0	6.5	304.8	203.2	126.3
250	10	267.4	4.0	6.5	381.0	254.0	157.8
300	12	318.5	4.5	6.5	457.2	304.8	189.4



同径チーズ TS

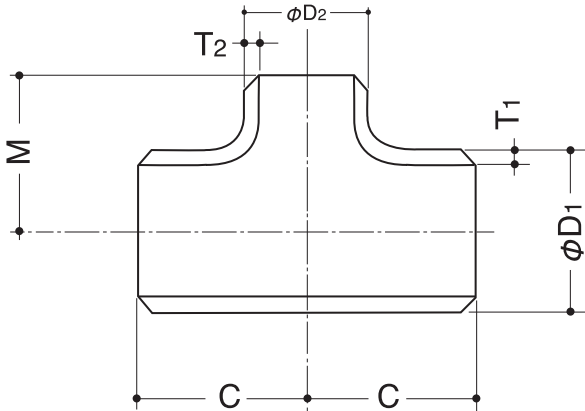


単位 mm

呼び径		外径	厚さ		中心から端面までの距離	
			Sch10S	Sch20S		
		OD	T	T	C	M
15 ^A	1/2 ^B	21.7	2.1	2.5	25.4	25.4
20	3/4	27.2	2.1	2.5	28.6	28.6
25	1	34.0	2.8	3.0	38.1	38.1
32	1 1/4	42.7	2.8	3.0	47.6	47.6
40	1 1/2	48.6	2.8	3.0	57.2	57.2
50	2	60.5	2.8	3.5	63.5	63.5
65	2 1/2	76.3	3.0	3.5	76.2	76.2
80	3	89.1	3.0	4.0	85.7	85.7
100	4	114.3	3.0	4.0	104.8	104.8
125	5	139.8	3.4	5.0	123.8	123.8
150	6	165.2	3.4	5.0	142.9	142.9
200	8	216.3	4.0	6.5	177.8	177.8
250	10	267.4	4.0	6.5	215.9	215.9
300	12	318.5	4.5	6.5	254.0	254.0



径違いチーズ TR



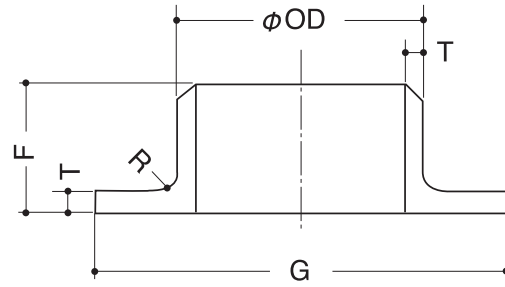
単位 mm

呼び径		外径		厚さ				中心から端面までの距離	
				Sch10S		Sch20S			
		D ₁	D ₂	T ₁	T ₂	T ₁	T ₂	C	M
20 x 20 x 15 ^A	3/4 x 3/4 x 1/2 ^B	27.2	21.7	2.1	2.1	2.5	2.5	28.6	28.6
25 x 25 x 20	1 x 1 x 3/4	34.0	27.2	2.8	2.1	3.0	2.5	38.1	38.1
25 x 25 x 15	1 x 1 x 1/2	34.0	21.7	2.8	2.1	3.0	2.5	38.1	38.1
32 x 32 x 25	1 1/4 x 1 1/4 x 1	42.7	34.0	2.8	2.8	3.0	3.0	47.6	47.6
32 x 32 x 20	1 1/4 x 1 1/4 x 3/4	42.7	27.2	2.8	2.1	3.0	2.5	47.6	47.6
32 x 32 x 15	1 1/4 x 1 1/4 x 1/2	42.7	21.7	2.8	2.1	3.0	2.5	47.6	47.6
40 x 40 x 32	1 1/2 x 1 1/2 x 1 1/4	48.6	42.7	2.8	2.8	3.0	3.0	57.2	57.2
40 x 40 x 25	1 1/2 x 1 1/2 x 1	48.6	34.0	2.8	2.8	3.0	3.0	57.2	57.2
40 x 40 x 20	1 1/2 x 1 1/2 x 3/4	48.6	27.2	2.8	2.1	3.0	2.5	57.2	57.2
50 x 50 x 40	2 x 2 x 1 1/2	60.5	48.6	2.8	2.8	3.5	3.0	63.5	60.3
50 x 50 x 32	2 x 2 x 1 1/4	60.5	42.7	2.8	2.8	3.5	3.0	63.5	57.2
50 x 50 x 25	2 x 2 x 1	60.5	34.0	2.8	2.8	3.5	3.0	63.5	50.8
65 x 65 x 50	2 1/2 x 2 1/2 x 2	76.3	60.5	3.0	2.8	3.5	3.5	76.2	69.9
65 x 65 x 40	2 1/2 x 2 1/2 x 1 1/2	76.3	48.6	3.0	2.8	3.5	3.0	76.2	66.7
80 x 80 x 65	3 x 3 x 2 1/2	89.1	76.3	3.0	3.0	4.0	3.5	85.7	82.6
80 x 80 x 50	3 x 3 x 2	89.1	60.5	3.0	2.8	4.0	3.5	85.7	76.2
80 x 80 x 40	3 x 3 x 1 1/2	89.1	48.6	3.0	2.8	4.0	3.0	85.7	73.0
100 x 100 x 80	4 x 4 x 3	114.3	89.1	3.0	3.0	4.0	4.0	104.8	98.4
100 x 100 x 65	4 x 4 x 2 1/2	114.3	76.3	3.0	3.0	4.0	3.5	104.8	95.3
100 x 100 x 50	4 x 4 x 2	114.3	60.5	3.0	2.8	4.0	3.5	104.8	88.9
125 x 125 x 100	5 x 5 x 4	139.8	114.3	3.4	3.0	5.0	4.0	123.8	117.5
125 x 125 x 80	5 x 5 x 3	139.8	89.1	3.4	3.0	5.0	4.0	123.8	111.1
125 x 125 x 65	5 x 5 x 2 1/2	139.8	76.3	3.4	3.0	5.0	3.5	123.8	108.0
150 x 150 x 125	6 x 6 x 5	165.2	139.8	3.4	3.4	5.0	5.0	142.9	136.5
150 x 150 x 100	6 x 6 x 4	165.2	114.3	3.4	3.0	5.0	4.0	142.9	130.2
150 x 150 x 80	6 x 6 x 3	165.2	89.1	3.4	3.0	5.0	4.0	142.9	123.8
200 x 200 x 150	8 x 8 x 6	216.3	165.2	4.0	3.4	6.5	5.0	177.8	168.3
200 x 200 x 125	8 x 8 x 5	216.3	139.8	4.0	3.4	6.5	5.0	177.8	161.9
200 x 200 x 100	8 x 8 x 4	216.3	114.3	4.0	3.0	6.5	4.0	177.8	155.6
250 x 250 x 200	10 x 10 x 8	267.4	216.3	4.0	4.0	6.5	6.5	215.9	203.2
250 x 250 x 150	10 x 10 x 6	267.4	165.2	4.0	3.4	6.5	5.0	215.9	193.7
250 x 250 x 125	10 x 10 x 5	267.4	139.8	4.0	3.4	6.5	5.0	215.9	190.5
300 x 300 x 250	12 x 12 x 10	318.5	267.4	4.5	4.0	6.5	6.5	254.0	241.3
300 x 300 x 200	12 x 12 x 8	318.5	216.3	4.5	4.0	6.5	6.5	254.0	228.6
300 x 300 x 150	12 x 12 x 6	318.5	165.2	4.5	3.4	6.5	5.0	254.0	219.1



ステンレス鋼製突合せ溶接式管継手

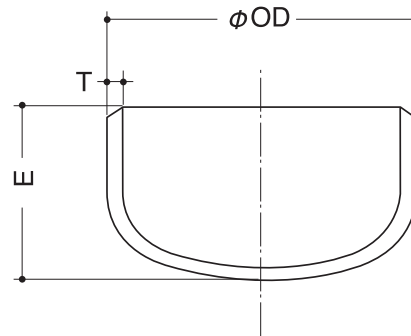
ラップジョイント LJ



単位 mm

呼び径		外径	厚さ		ツバ径 10K	長さ	コーナーR	
			Sch10S	Sch20S			最大	最小
		OD	T	T	G	F		
15 ^A	1/2 ^B	21.7	2.1	2.5	51	30	3.0	1.5
20	3/4	27.2	2.1	2.5	56	30	3.0	1.5
25	1	34.0	2.8	3.0	67	50	3.0	1.5
32	1 1/4	42.7	2.8	3.0	76	50	4.0	2.0
40	1 1/2	48.6	2.8	3.0	81	50	4.0	2.0
50	2	60.5	2.8	3.5	96	50	4.0	2.0
65	2 1/2	76.3	3.0	3.5	116	50	5.0	2.5
80	3	89.1	3.0	4.0	126	50	5.0	2.5
100	4	114.3	3.0	4.0	151	50	5.0	2.5
125	5	139.8	3.4	5.0	182	50	6.0	3.0
150	6	165.2	3.4	5.0	212	50	6.0	3.0
200	8	216.3	4.0	6.5	262	65	6.0	3.0
250	10	267.4	4.0	6.5	324	65	6.0	3.0
300	12	318.5	4.5	6.5	368	65	9.0	3.0

キャップ CAP



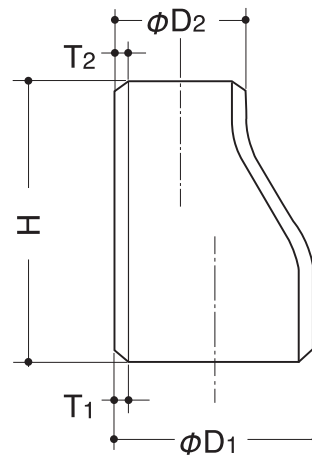
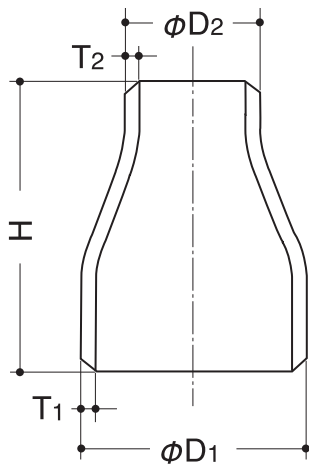
単位 mm

呼び径		外径	厚さ		背から端面までの距離
			Sch10S	Sch20S	
		OD	T	T	E
15 ^A	1/2 ^B	21.7	2.1	2.5	25.4
20	3/4	27.2	2.1	2.5	25.4
25	1	34.0	2.8	3.0	38.1
32	1 1/4	42.7	2.8	3.0	38.1
40	1 1/2	48.6	2.8	3.0	38.1
50	2	60.5	2.8	3.5	38.1
65	2 1/2	76.3	3.0	3.5	38.1
80	3	89.1	3.0	4.0	50.8
100	4	114.3	3.0	4.0	63.5
125	5	139.8	3.4	5.0	76.2
150	6	165.2	3.4	5.0	88.9
200	8	216.3	4.0	6.5	101.6
250	10	267.4	4.0	6.5	127.0
300	12	318.5	4.5	6.5	152.4



ステンレス鋼製突合せ溶接式管継手

コンセントリック・レジューサ RC エキセントリック・レジューサ RE



単位 mm

呼び径		外径		厚さ				端面から端面 までの距離
				Sch10S		Sch20S		
		D ₁	D ₂	T ₁	T ₂	T ₁	T ₂	H
20 x 15 ^A	3/4 x 1/2 ^B	27.2	21.7	2.1	2.1	2.5	2.5	38.1
25 x 20	1 x 3/4	34.0	27.2	2.8	2.1	3.0	2.5	50.8
25 x 15	1 x 1/2	34.0	21.7	2.8	2.1	3.0	2.5	50.8
32 x 25	1 1/4 x 1	42.7	34.0	2.8	2.8	3.0	3.0	50.8
32 x 20	1 1/4 x 3/4	42.7	27.2	2.8	2.1	3.0	2.5	50.8
32 x 15	1 1/4 x 1/2	42.7	21.7	2.8	2.1	3.0	2.5	50.8
40 x 32	1 1/2 x 1 1/4	48.6	42.7	2.8	2.8	3.0	3.0	63.5
40 x 25	1 1/2 x 1	48.6	34.0	2.8	2.8	3.0	3.0	63.5
40 x 20	1 1/2 x 3/4	48.6	27.2	2.8	2.1	3.0	2.5	63.5
50 x 40	2 x 1 1/2	60.5	48.6	2.8	2.8	3.5	3.0	76.2
50 x 32	2 x 1 1/4	60.5	42.7	2.8	2.8	3.5	3.0	76.2
50 x 25	2 x 1	60.5	34.0	2.8	2.8	3.5	3.0	76.2
65 x 50	2 1/2 x 2	76.3	60.5	3.0	2.8	3.5	3.5	88.9
65 x 40	2 1/2 x 1 1/2	76.3	48.6	3.0	2.8	3.5	3.0	88.9
80 x 65	3 x 2 1/2	89.1	76.3	3.0	3.0	4.0	3.5	88.9
80 x 50	3 x 2	89.1	60.5	3.0	2.8	4.0	3.5	88.9
80 x 40	3 x 1 1/2	89.1	48.6	3.0	2.8	4.0	3.0	88.9
100 x 80	4 x 3	114.3	89.1	3.0	3.0	4.0	4.0	101.6
100 x 65	4 x 2 1/2	114.3	76.3	3.0	3.0	4.0	3.5	101.6
100 x 50	4 x 2	114.3	60.5	3.0	2.8	4.0	3.5	101.6
125 x 100	5 x 4	139.8	114.3	3.4	3.0	5.0	4.0	127.0
125 x 80	5 x 3	139.8	89.1	3.4	3.0	5.0	4.0	127.0
125 x 65	5 x 2 1/2	139.8	76.3	3.4	3.0	5.0	3.5	127.0
150 x 125	6 x 5	165.2	139.8	3.4	3.4	5.0	5.0	139.7
150 x 100	6 x 4	165.2	114.3	3.4	3.0	5.0	4.0	139.7
150 x 80	6 x 3	165.2	89.1	3.4	3.0	5.0	4.0	139.7
200 x 150	8 x 6	216.3	165.2	4.0	3.4	6.5	5.0	152.4
200 x 125	8 x 5	216.3	139.8	4.0	3.4	6.5	5.0	152.4
200 x 100	8 x 4	216.3	114.3	4.0	3.0	6.5	4.0	152.4
250 x 200	10 x 8	267.4	216.3	4.0	4.0	6.5	6.5	177.8
250 x 150	10 x 6	267.4	165.2	4.0	3.4	6.5	5.0	177.8
250 x 125	10 x 5	267.4	139.8	4.0	3.4	6.5	5.0	177.8
300 x 250	12 x 10	318.5	267.4	4.5	4.0	6.5	6.5	203.2
300 x 200	12 x 8	318.5	216.3	4.5	4.0	6.5	6.5	203.2
300 x 150	12 x 6	318.5	165.2	4.5	3.4	6.5	5.0	203.2